



Guarantee

Due to the continuous development of its products, Smartmeterq Srl reserves the right to make changes to the technical data and functions without prior notice.

The consumer is guaranteed against defects in conformity of the product according to the European Directive 1999/44/c as well as the document on the manufacturer's warranty policy. On request, the full warranty text is available from the seller or at <http://smartmeterq.com/guarantee>

Smartmeterq Srl

Registered office: Via del lavoro, 271 - 37050 Angiari (VR) - Italy
www.smartmeterq.com - info@smartmeterq.com

USER'S MANUAL UGM-G4 (Small Version)

MAN_IG0022_eng_UGM-G4 (Small) - ED.1.0_Sep 2018
(Valid Release Manual:1.0)

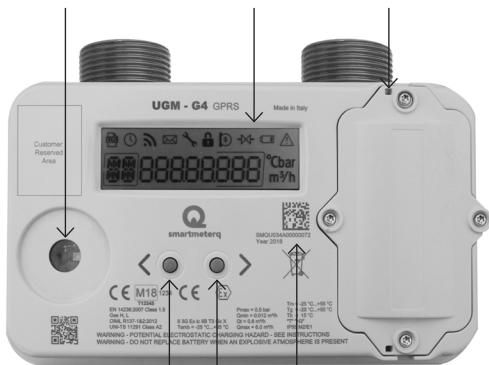


1. User Manual UGM G4	pg.2
2. Display	pg.2

1. User Manual UGM-G4 (Small Version)

This document is an extract from the product use and maintenance manual, containing instructions for the end user to consult the data displayed on the meter display.

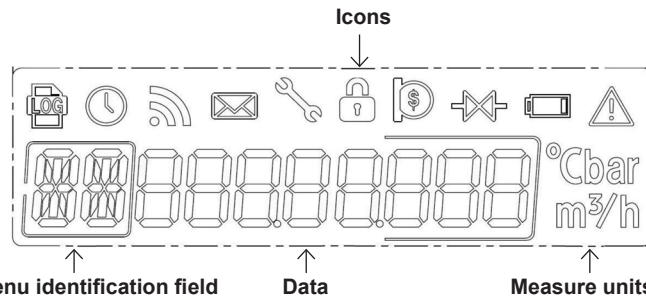
Configuration interface Display Anti-fraud seal



Menu navigation keys Serial number

2. Display

The display in normal operating conditions is off. To turn on the display, press a navigation key and keep it pressed for at least 2 seconds. When the display is turned on, it shows the test screen where all the segments are switched on. The test screen remains active for 3 seconds, then the display shows the gas consumption totalizer. In this menu the "T" indication is displayed in the menu identification field. To scroll through the various available menus, press the navigation keys: the right key allows to scroll through the menus in the sense indicated in the table on page 2, the left key allows to scroll through the menus in the opposite direction. The display automatically turns off after 30 seconds of inactivity.



ID MENU	ICON	DESCRIPTION / NOTE
-	All	All segments on
T	-	Volume counter
TA	-	Volume counter in alarm condition
T1	-	Volume counter tariff zone F1
T2	-	Volume counter tariff zone F2
T3	-	Volume counter tariff zone F3
T	Log	Volume counter of previous billing period
TA	Log	Volume counter in alarm condition of previous billing period
T1	Log	Volume counter tariff zone F1 of previous billing period
T2	Log	Volume counter tariff zone F2 of previous billing period
T3	Log	Volume counter tariff zone F3 of previous billing period
DF	Log - Clock	End date of previous billing period
QM	-	Conventional maximum flow
ID	-	Point of delivery
D	Clock	Date
H	Clock	Hour
F	-	Current valid tariff
MU	Mailbox	Message for the user
SV	Valve	Valve status (00A open – 20C close – 40r enabled for re-open)
SM	-	Meter status
DG	-	Meter diagnosis

Warning: The only operation allowed to the end user is to press the keys to consult the meter menu. Any modification or tampering with the meter is forbidden. Do not damage or remove the anti-fraud seal. If the anti-fraud seal is broken, the meter has to be submitted to a new metrological test. The meter battery may only be replaced by personnel authorized by the gas distributor. Any improper use of the meter is subject to current regulations.

For further details, see the user and maintenance manual at site www.smartmeterq.com